







# gala

**Reference** G3853400  
**Description** Kitchen mixer  
**Collection** TEZA

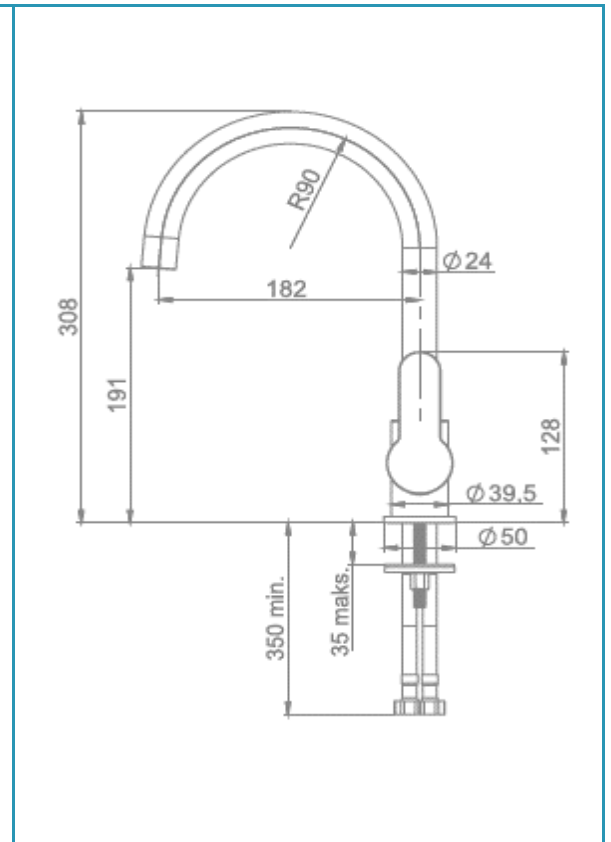


## TECHNICAL SPECIFICATIONS

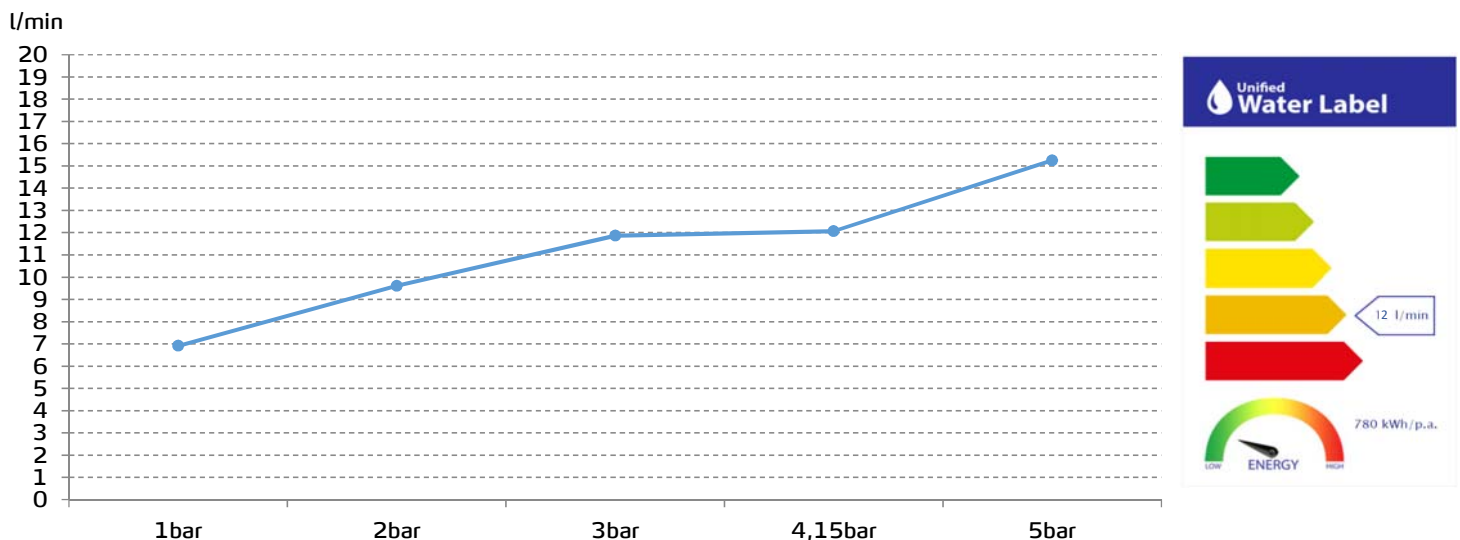
-  Single lever mixer with cold start
-  Rotating spout
-  Contributes to obtaining BREEAM, LEED and VERDE certifications through its sustainable use of water
-  Produced with recycled materials
-  The alloy used to produce it is included in the "European Positive List" (no migration of hazardous materials to water)
-  G-Last chrome technology: high resistance against scratches

Ceramic discs cartridge  $\varnothing 35$  mm

3/8" flexible connection hoses included



## FLOW RATE



Data measured in maximum flow position with mixed water