

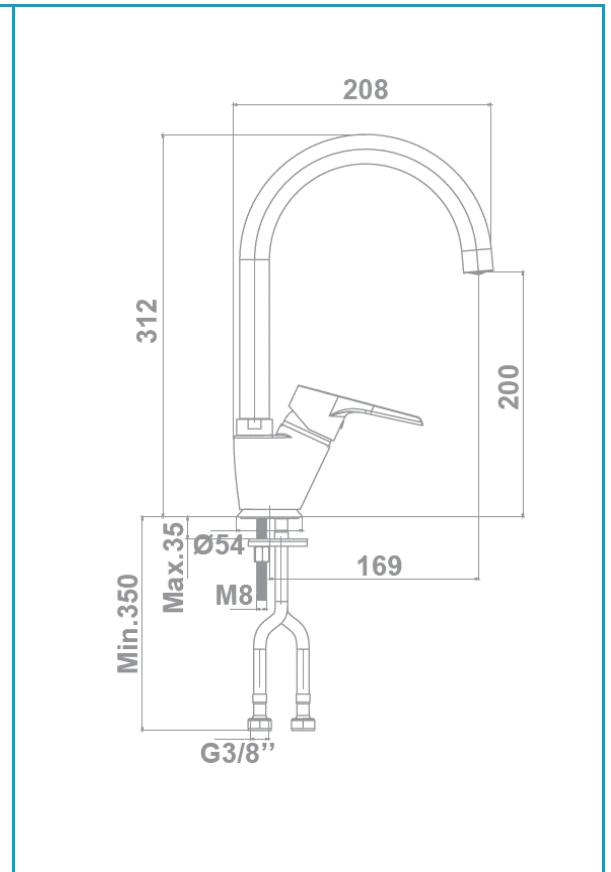
# gala

**Reference** G3991200  
**Description** Kitchen mixer  
**Collection** CLUNIA

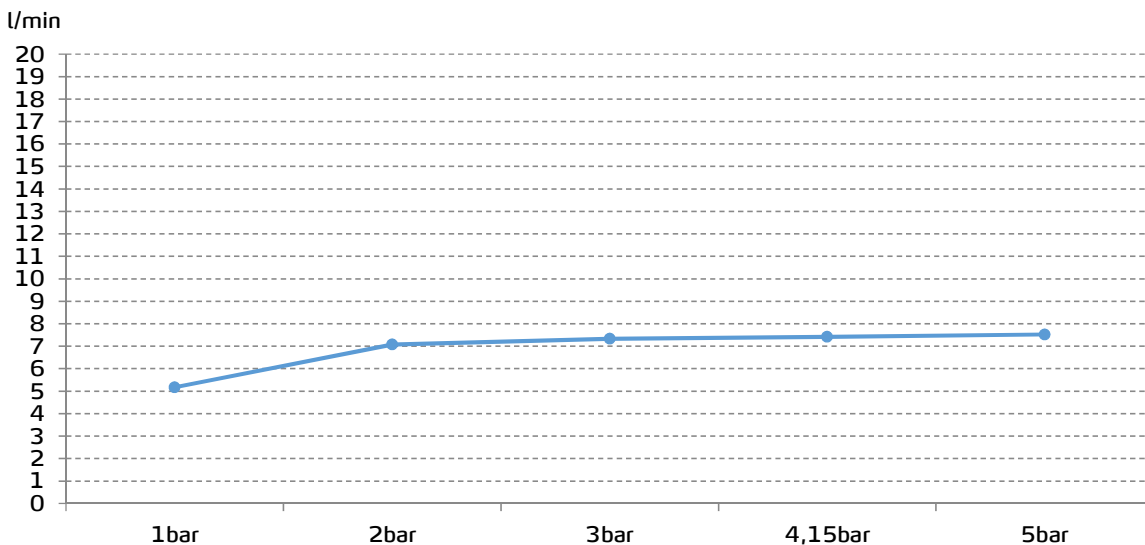


## TECHNICAL SPECIFICATIONS

- Single lever mixer with cold start
  - Rotating spout
  - AENOR certification
  - Contributes to obtaining BREEAM, LEED and VERDE certifications through its sustainable use of water
  - Produced with recycled materials
  - The alloy used to produce it is included in the "European Positive List" (no migration of hazardous materials to water)
  - Low noise level
  - G-Last chrome technology: high resistance against scratches
- Ceramic discs cartridge  $\varnothing 35$  mm
- 3/8" flexible connection hoses included



## FLOW RATE



Data measured in maximum flow position with mixed water